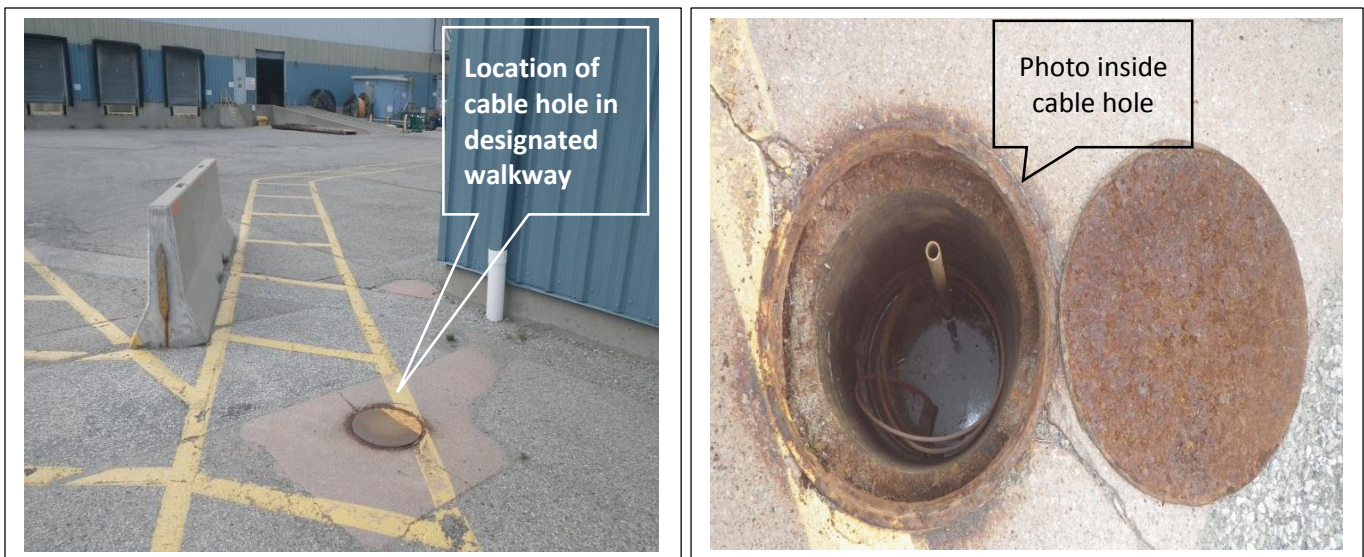




**What Happened:** On July 18<sup>th</sup>, 2014, a worker walking from a parking lot to a control room stepped on a 'cable-hole' cover. When the worker stepped on the cover, it shifted, and the worker's leg partially went into the hole, scraping his shin which required medical treatment.



#### **INCIDENT LEARNINGS & FOLLOW-UPS:**

- Location of cable hole cover was in a designated walkway
- The investigation has started and severe corrosion has been noted on both the cover and the supporting ring

#### **FOLLOW-UP ACTIVITY:**

- The investigation team actions include evaluating other covers across the site to determine mitigations/ controls that are required
- Reinforces the importance of using risk assessment tools to **ASSESS**, **ANALYZE** and **ACT** for all tasks that we perform:
  - Avoid (where possible) walking on covers
  - Inform area owners of any covers that appear to have stability/ excess corrosion concerns